

Distributed by:

**Lab Unlimited**  
CARL STUART GROUP

Tallaght Business Park  
Whitestown, Dublin 24,  
Ireland  
D24 RFK3

Tel: (01) 4523432  
Fax: (01) 4523967

E-mail: [info@labunlimited.com](mailto:info@labunlimited.com)  
Web: [www.labunlimited.com](http://www.labunlimited.com)

Quatro House, Frimley Road,  
Camberley,  
United Kingdom  
GU16 7ER

Tel: 08452 30 40 30  
Fax: 08452 30 50 30

E-mail: [info@labunlimited.co.uk](mailto:info@labunlimited.co.uk)  
Web: [www.labunlimited.co.uk](http://www.labunlimited.co.uk)

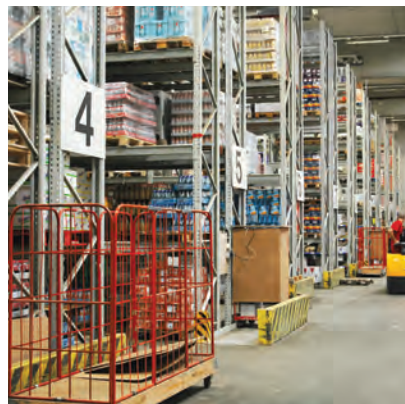
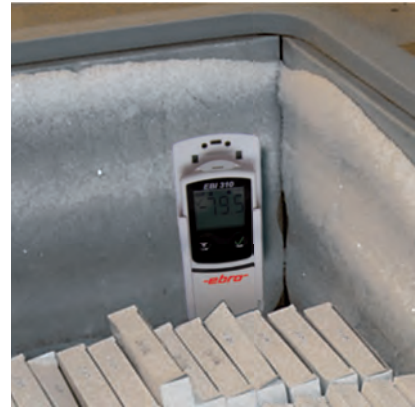
Cold Chain and Process Monitoring | EBI 3x0 USB Data Loggers

## EBI 3x0 USB Data Loggers

### Cold Chain Monitoring

The easy to use data loggers with USB connection monitor the temperature and/or humidity during transport and storage of sensitive goods like medicine, food, serums etc. Measurement reports are created automatically as PDF files when you connect the logger to a PC.

The EBI 300 and EBI 310 USB data loggers are suitable for multi-use, the EBI 330 data loggers are single-use versions which can be ordered preconfigured and are used especially when returning a more expensive multi-use logger to the sender after a shipment is difficult. Please contact us for more information.



## Program | Measure

- Programming of the logger with the help of the free online configurator at **www.ebi300.com** or optionally via the ebro software Winlog.basic, Winlog.light or Winlog.pro, but also Winlog.med and Winlog.validation
- Set optional limits and start to record the measurement data

## Connect | Readout

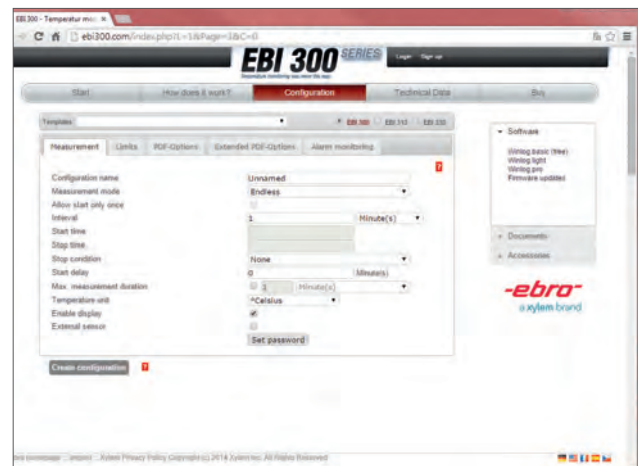
- Connection of the logger to any PC via the USB port
- Automatic generation of a PDF report with all important measurement data

## Evaluate | Archive

- Store, save or email the PDF-report
- Further processing of the measurement data with the software Winlog.basic, Winlog.light or Winlog.pro

## Benefits

- Direct USB connection
- Automatic PDF report generation
- Programmable at **www.ebi300.com**, no special software for programming and readout required but available
- Indication of alarm status via flashing LED
- Data integrity
- Conforms with FDA 21 CFR Part 11, DIN EN 12830 and ATP
- The data loggers help you to comply with GMP and VO (EG) 37/2005
- Free firmware updates at your place via software
- Excellent value-for-money



## Digital interface

- Digital interface between loggers and external probes (at EBI 300 TE, EBI 300 TH, EBI 310 TE, EBI 310 TH, EBI 310 DI and EBI 310 TX).
- Data logger functions as data collector with optional internal sensor
- Easy exchange of the external probes e.g. for calibration: remove and send probe, connect replacement probe, measure!
- No calibration of the data collector required, if internal probe is not used!

## Which data logger is right for you?

Every EBI 3x0 USB data logger have the afore mentioned properties. Depending on the application, claim and your purse, there are different requirements for which we have the right devices. The following overview shall help making the decision.

	EBI 330-T30	EBI 330-T85	EBI 300	EBI 300 TE	EBI 300 TH	EBI 310	EBI 310 TE	EBI 310 DI	EBI 310 TX	EBI 310 TH
<b>Applications</b>										
Monitoring of deep temperatures		✓					✓	✓	✓*	
Monitoring of high temperatures							✓		✓*	
Humidity monitoring					✓					✓
Storage monitoring			✓	✓	✓	✓	✓	✓	✓*	✓
Transport monitoring	✓	✓	✓	✓	✓	✓	✓	✓	✓*	✓
Process monitoring				✓	✓		✓		✓*	✓
Usage within dry ice		✓						✓		
<b>Measurement channels</b>										
Internal temperature channel	✓	✓	✓	✓	✓	✓	✓	✓	✓	✓
External temperature channel				1	1		1	1	2*	1
Sensor cable				✓			✓	✓	✓*	
High precision (Pt 1000)		✓				✓	✓	✓	✓	✓
Humidity channel					✓					✓
<b>Usage</b>										
Multi-use			✓	✓	✓	✓	✓	✓	✓	✓
Single-use	✓	✓								
<b>Calibration certificate</b>										
Including factory calibration certificate			✓	✓	✓	✓	✓	✓	✓*	✓
Batch calibration certificate available upon request	✓	✓								
<b>Other features</b>										
Display			✓	✓	✓	✓	✓	✓	✓	✓
Very flexible alarms (5 limits and MKT)						✓	✓	✓	✓	✓
High memory capacity (120.000 measurements)						✓	✓	✓	✓	✓

\* with connected, exchangeable sensors

**General technical specifications: valid for EBI 300 data logger types\***

Memory capacity	40,000 measurements
Alarm	2 limits
PDF creation	PDF
LED	Yes (red)
Storage temperature	-40 °C ... +85 °C (-40 °F ... +185 °F)
Sample rate	1 min ... 24 h
Measurement modes	<ul style="list-style-type: none"> <li>• Endless measurement</li> <li>• Start / Stop</li> <li>• Measurement until end of memory</li> <li>• Start with key press</li> </ul>
Display	Value, MIN / MAX, until end of memory, alarm on / off
Maximum start delay	72 h
Housing material	Polycarbonate
Certificate	Factory calibration certificate
Battery	Lithium button cell (CR 2450), 3 V
Battery lifetime	Up to 2 years, depending on applications
Norms	DIN EN 12830

\* Please find the exact technical data of each EBI 300 data logger type on this double page.

**EBI 300 Multi-Use USB Data Logger**  
Standard version



The device has been certified together with the EB 4401 food inspection case (please see page 167).



**Technical Data**

Measurement range/operating temperature	-30 °C ... +70 °C (-22 °F ... +158 °F) <i>By connecting an external probe, the temperature measurement range can be extended.</i>
Accuracy	± 0.5 °C (-20 °C ... +40 °C / -4 °F ... +104 °F) ± 0.8 °C for the remaining measurement range
Sensor	NTC
Resolution	0.1 °C
Dimensions (L x W x H)	80 x 33 x 14 mm
Protection class	IP 65

Type	Description	Part No.
EBI 300	Standard USB Data Logger	7.655 865

Accessories for EBI 300, EBI 300 TE and EBI 300 TH



EBI 300 TE + EBI 300 WM2



**EBI 300-WM2** Wall Mount for EBI 300 / 310



**EBI 300 WM3** transportation mount for EBI 300/310 made of stainless steel

Type	Description	Part No.
EBI 300-WM2	Wall Mount for EBI 300 / 310	9.908 017
EBI 300 WM3	Transportation mount for EBI 300/310	6.281 570

## EBI 300 TE Multi-Use USB Data Logger with external temperature probe

*Fast, flexible core temperature measurements*



EBI 300 TE

- Simultaneous measurement of core temperature and ambient temperature
- Internal temperature probe usable additionally

### Technical Data

Measurement range external temperature	-35 °C ... +70 °C (-31 °F ... +158 °F)
Measurement range internal temperature / operating temperature	-30 °C ... +70 °C (-22 °F ... +158 °F)
Accuracy (internal and external)	± 0.5 °C (-20 °C ... +40 °C / -4 °F ... +104 °F) ± 0.8 °C for the remaining measurement range
Probe	NTC, Stainless steel, Ø 4 mm, L = 50 mm, pointed
Cable	PVC, L = 1m, waterproof, oilproof and food safe
Resolution	0.1 °C
Dimensions (L x W x H)	91 x 33 x 14mm
Protection class	IP 65

Type	Description	Part No.
EBI 300 TE	USB Data logger with external temperature probe	6.266 911
TPC 300	Replacement probe for EBI 300 TE	9.908 027

## EBI 300 TH Multi-Use USB Data Logger with external humidity and temperature probe

*Relative humidity monitoring in storages and during transports*



EBI 300 TH

Filter caps for the protection of the humidity probe available; see page 146.

- Internal temperature probe usable additionally

### Technical Data

Measurement range temperature / operating temperature	-30 °C ... +70 °C (-22 °F ... +158 °F)
Accuracy (internal)	± 0.5 °C (-20 °C ... +40 °C / -4 °F ... +104 °F) ± 0.8 °C for the remaining measurement range
Accuracy (external)	± 0.5 °C (-20 °C ... +40 °C / -4 °F ... +104 °F) ± 1.0 °C for the remaining measurement range
measurement range humidity	0% rH ... 100% rH
Accuracy humidity	± 3% between 10% rH ... 90% rH (at 25 °C / +77 °F) ± 5% for the remaining measurement range
Probe humidity	Capacitive
Resolution temperature	0.1 °C
Resolution humidity	0.1% rH
Dimensions (L x W x H)	129 x 33 x 14 mm
Protection class	IP 20

Type	Description	Part No.
EBI 300 TH	USB Data logger with external humidity probe	6.266 910
TPH 400	Replacement probe for EBI 300 TH	6.284 915

**General technical specifications: valid for all EBI 310 data logger types\***

Memory capacity	120,000 measurements
Alarm	5 ranges
PDF creation	PDF/A 1b
LED	Yes (red and yellow)
Storage temperature	-40 °C ... +85 °C (-40 °F ... +185 °F)
Sample rate	1 s ... 24 h
Measurement modes	<ul style="list-style-type: none"> <li>• Endless measurement</li> <li>• Start / Stop</li> <li>• Measurement until end of memory</li> <li>• Start with key press</li> </ul>
Display	Value, MIN / MAX, until end of memory, alarm on / off
Maximum start delay	72 h
Housing material	Polycarbonate
Certificate	Factory calibration certificate
Norms	DIN EN 12830

\* Please find the exact technical data of each EBI 310 data logger type on the next pages.

**EBI 310 Multi-Use USB Data Logger**  
*High precision version*



**Technical Data**

Measurement range/operating temperature	-30 °C ... +75 °C (-22 °F ... +167 °F) <i>By connecting an external probe, the temperature measurement range can be extended.</i>
Accuracy	±0.2 °C (-30 °C ... +30 °C / -22 °F ... +86 °F) ±0.5 °C for the remaining measurement range
Sensor	PT 1000
Resolution	0.1 °C
Dimensions (L x W x H)	80 x 33 x 14 mm
Protection class	IP 65
Battery	Lithium button cell (CR 2450), 3 V
Battery lifetime	Up to 2 years, depending on applications <i>re-adjustable with Winlog.pro</i>

Type	Description	Part No.
EBI 310	High Precision USB Data Logger	9.908 098

Accessories for the EBI 310, EBI 310 TE, EBI 310 DI, EBI 310 TX and EBI 310 TH



**EBI 300-WM2** Wall Mount for EBI 300 / 310



**EBI 300 WM3** transportation mount for EBI 300/310 made of stainless steel

Type	Description	Part No.
EBI 300-WM2	Wall Mount for EBI 300 / 310	9.908 017
EBI 300 WM3	Transportation mount for EBI 300/310	6.281 570

## EBI 310 TE Multi-Use USB Data Logger with external precision temperature probe



### Measurement of high and low temperatures



EBI 310 TE

- Simultaneous measurement of core temperature and ambient temperature
- Internal temperature probe usable additionally

#### Technical Data

Measurement range external temperature	-200°C ... +250°C (-328 °F ... +482 °F)
Measurement range internal temperature / operating temperature	-30 °C ... +75°C (-22 °F ... +167 °F)
Accuracy (internal)	± 0.2 °C (- 30 °C ... + 30 °C / -22 °F ... +86 °F) ± 0.5 °C for the remaining measurement range
Accuracy (external)	± 2.0 °C (- 200 °C ... -100 °C / - 328 °F ... - 148 °F) ± 1.0 °C (- 100 °C ... -20 °C / - 148 °F ... -4 °F) ± 0.2 °C (- 20 °C ... + 60 °C / -4 °F ... +160 °F) ± 0.5 °C (+60 °C ... + 250 °C / +160 °F ... +482 °F)
Probe	Pt 1000, Stainless steel, Ø 5 mm, L = 50 mm, blunt
Cable	PTFE, L = 1 m, waterproof, oilproof and food safe
Resolution	0.1 °C
Dimensions (L x W x H)	91 x 33 x 14 mm
Protection class	IP 65
Battery	Lithium button cell (CR 2450), 3V
Battery life time	Up to 2 years, depending on applications

*re-adjustable with Winlog.pro*

Type	Description	Part No.
EBI 310 TE	USB Data logger with external precision temperature probe	6.266 913
TPX 220	Replacement probe for EBI 310 TE	9.908 099
TPX 220-3	Replacement probe with 3m cable for EBI 310 TE	7.661 115

## EBI 310 DI Multi-Use USB Data Logger for dry ice measurements



### Precise temperature measurements in dry ice



EBI 310 DI

- Additional battery allows usage within dry ice
- Internal temperature probe usable additionally

#### Technical Data

Measurement range external temperature / operating temperature	-85°C ... +50°C (- 121 °F ... +122 °F)
Measurement range internal temperature	-30 °C ... +75°C (-22 °F ... +167 °F)
Accuracy (internal)	± 0.2 °C (- 30 °C ... + 30 °C / -22 °F ... +86 °F) ± 0.5 °C for the remaining measurement range
Accuracy (external)	± 1.0 °C (- 85 °C ... -20 °C / - 121 °F ... -4 °F) ± 0.2 °C (- 20 °C ... + 50 °C / -4 °F ... +122 °F)
Probe	Pt 1000, Stainless steel, Ø 5mm, L = 50mm, blunt
Cable	PTFE, L = 60cm, waterproof, oilproof and food safe
Resolution	0.1 °C
Dimensions (L x W x H)	100 x 33 x 14mm
Protection class	IP 65
Battery	Lithium button cell in the logger, lithium battery in the probe, both changeable by the user
Battery life time	<b>10 transports of up to 100h each</b>

*re-adjustable with Winlog.pro*

Type	Description	Part No.
EBI 310 DI	USB Data logger for dry ice measurements	6.282 436
TPX 250	Replacement probe for EBI 310 DI	9.908 100

## EBI 310 TH Multi-Use USB Data Logger with with external humidity and temperature probe



Relative humidity monitoring in storages and during transports



EBI 310 TH

Filter caps for the protection of the humidity probe available; see page 146.

- Internal temperature probe usable additionally

### Technical Data

Measurement range temperature / operating temperature	-30 °C ... +75°C (-22 °F ... +167 °F)
Accuracy (internal)	± 0.2 °C (- 30 °C ... + 30 °C / -22 °F ... +86 °F) ± 0.5 °C for the remaining measurement range
Accuracy (external)	± 0.5 °C (0 °C ... + 60 °C / +32 °F ... +140 °F) ± 0.8 °C for the remaining measurement range
Probe temperature	Pt 1000
Measurement range humidity	0% rH ... 100% rH
Accuracy humidity	± 2% between 10% rH ... 90% rH (at 25 °C / +77 °F) ± 4% for the remaining measurement range
Probe humidity	capacitive
Resolution temperature	0.1 °C
Resolution humidity	0.1% rH
Dimensions (L x W x H)	129 x 33 x 14mm
Protection class	IP 20
Battery	Lithium button cell (CR 2450), 3V
Battery life time	Up to 2 years, depending on applications

re-adjustable with Winlog.pro

Type	Description	Part No.
EBI 310 TH	USB Data logger with external humidity probe	6.266 912
TPH 500	Replacement probe for EBI 310 TH	6.263 842

## EBI 310 TX Multi-Use USB Data Logger with temperature-two-channel-adapter



Temperature monitoring in storages and during transport, process monitoring



EBI 310 TX

exchangeable sensors

- Up to two exchangeable probes can be connected; not included, see the following page
- Internal temperature probe usable additionally

### Technical Data

Measurement range external temperature	-200°C ... + 400°C (- 328 °F ... +752 °F), dependent on probe type
Measurement range internal temperature / operating temperature	-30 °C ... +75°C (-22 °F ... +167 °F)
Accuracy (internal)	± 0.2 °C (- 30 °C ... + 30 °C / -22 °F ... +86 °F) ± 0.5 °C for the remaining measurement range
Probe	Pt 1000
Resolution	0.1 °C
Dimensions (L x W x H)	111 x 33 x 14mm
Protection class	IP 65
Battery	Lithium button cell (CR 2450), 3V
Battery life time	Up to 2 years, depending on applications

re-adjustable with Winlog.pro

Type	Description	Part No.
EBI 310 TX	USB Data logger with temperature-two-channel-adapter	7.643 731
TPX 310	Replacement adapter for EBI 310 TX	6.264 938